

2-4 VIMY ST, BANKSTOWN, NSW 2200

CONCEPT STORMWATER PLAN

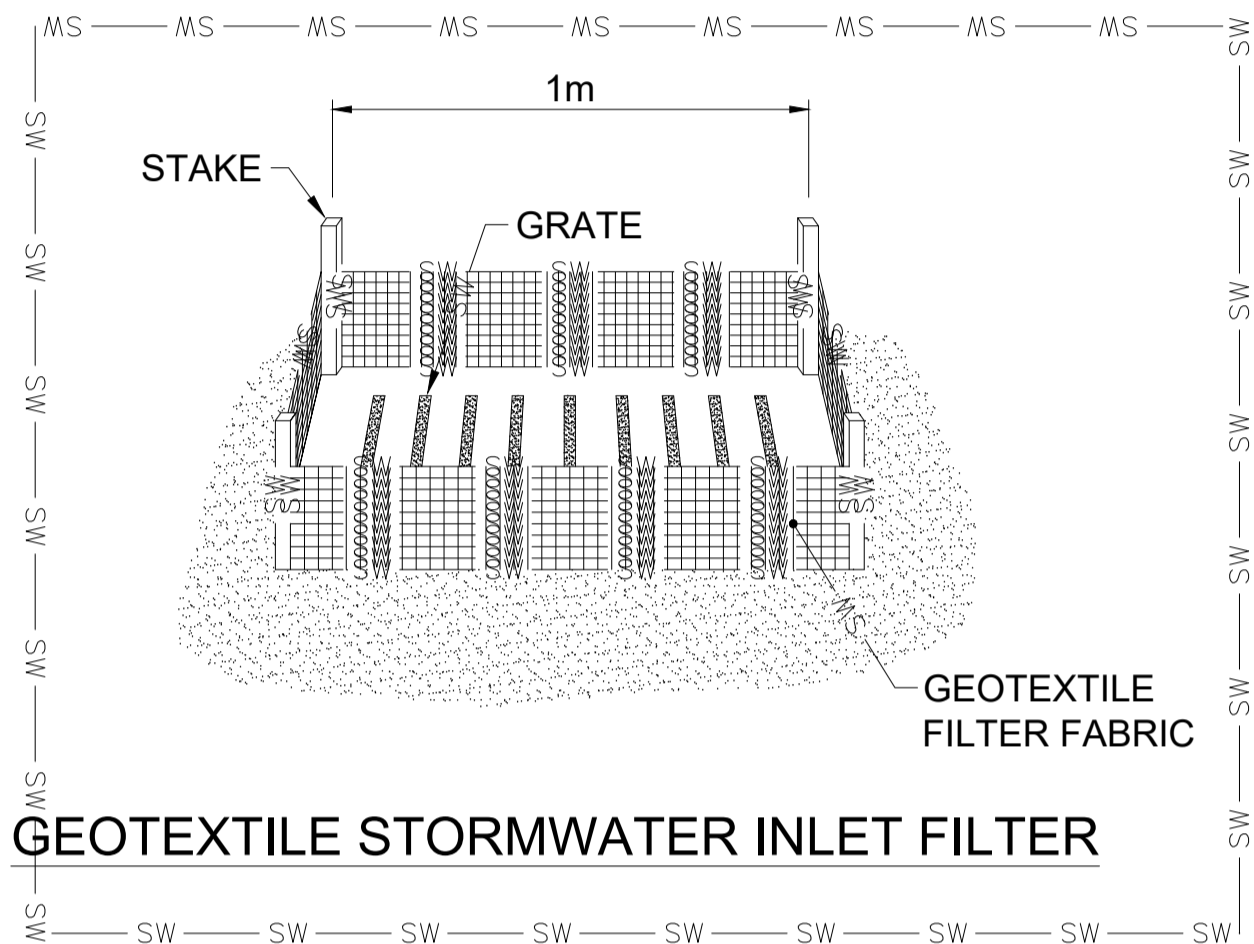
GENERAL

- G1. THESE DRAWINGS SHALL BE READ IN CONJUNCTION WITH ALL ARCHITECTURAL & OTHER WORKING DRAWINGS, SPECIFICATIONS & WITH SUCH WRITTEN INSTRUCTIONS AS MAY BE ISSUED DURING THE COURSE OF THE CONTRACT.
- G2. ALL WORKMANSHIP & MATERIALS SHALL BE IN ACCORDANCE WITH THE REQUIREMENTS OF THE CURRENT EDITION OF THE RELEVANT AUSTRALIAN STANDARDS, THE BUILDING CODE OF AUSTRALIA AND ANY OTHER APPLICABLE AUTHORITY REQUIREMENTS.
- G3. ANY CONFLICT BETWEEN THESE NOTES, THE SPECIFICATION, THE DRAWINGS OR ANY OTHER RELEVANT DOCUMENTS SHALL BE REFERRED TO ABCON ENGINEERS FOR DECISION PRIOR TO PROCEEDING WITH THE WORK.
- G4. DIMENSIONS SHALL NOT BE OBTAINED BY SCALING THE DRAWINGS. FOR SETTING OUT DIMENSIONS & LEVELS REFER TO ARCHITECTURAL DRAWINGS.
- G5. THE BUILDER SHALL BE RESPONSIBLE FOR THE PROVISION OF ALL SHORING TO MAINTAIN THE STABILITY & INTEGRITY OF EXCAVATIONS & ADJACENT STRUCTURES.
- G6. IT IS THE CONTRACTOR'S RESPONSIBILITY TO LOCATE ALL SERVICES PRIOR TO COMMENCEMENT OF ANY EARTHWORKS.
- G7. ALL DIMENSIONS ARE IN MILLIMETERS UNLESS NOTED OTHERWISE.
- STORMWATER**
- W1. ALL LEVELS ARE TO A.H.D. UNO.
- W2. THE STORMWATER SYSTEM IS DESIGNED TO COMPLY WITH COUNCIL'S DESIGN CRITERIA AND TO APPROXIMATELY MAINTAIN EXISTING FLOW PATTERNS.
- W3. OVERLAND FLOW PATHS ARE PRESERVED.
- W4. EXISTING DRAINAGE AND LEVELS ARE BASED ON SURVEY PROVIDED & SHOULD BE ASSUMED TO BE APPROXIMATE. ALLOW TO CONFIRM ALL RELEVANT DETAILS BEFORE PROCEEDING WITH AFFECTED AREAS.
- W5. ALL WORK TO COMPLY WITH AS3500.3.
- W6. ALL PITS TO BE PRECAST CONCRETE OR F.R.C. UNO.
- W7. DOWNPIPE LOCATIONS SHOULD BE CONFIRMED WITH ARCHITECT'S PLAN UNO.
- W8. GRADE LOCAL SURFACES INTO PITS TO ENSURE COLLECTION OF WATER & THAT THERE ARE NO AREAS OF PONDING, TYPICAL.
- W9. GRATED TRENCHES AND SILT ARRESTOR PITS TO BE INSPECTED AND CLEANED AFTER PERIODS OF HEAVY RAINFALL.
- W10. TREE ROOTS TO BE AVOIDED DURING PLACEMENT OF DRAINAGE SYSTEM.
- W11. ALL PIPES TO BE Ø100 UPVC UNO.
- W12. ALL PIPES TO HAVE 100 MIN. COVER IN LANDSCAPED AREAS AND 600 MIN. COVER IN TRAFFICABLE AREAS.
- W13. ALL INLET AND OUTLET PIPES FROM PITS TO BE CONNECTED AT THE HIGHEST POSSIBLE INVERT LEVEL WHILST KEEPING 1% MIN. GRADE UNLESS NOTED OTHERWISE.
- W14. FINISHED SURFACES TO BE GRADED AWAY FROM THE DWELLING AND TOWARD THE PITS.
- W15. GRATED TRENCHES TO BE 1% MIN. GRADE THROUGHOUT TO OUTLET PIPE.

STORMWATER

- W1. ALL LEVELS ARE TO A.H.D. UNO.
- W2. THE STORMWATER SYSTEM IS DESIGNED TO COMPLY WITH COUNCIL'S DESIGN CRITERIA AND TO APPROXIMATELY MAINTAIN EXISTING FLOW PATTERNS.
- W3. OVERLAND FLOW PATHS ARE PRESERVED.
- W4. EXISTING DRAINAGE AND LEVELS ARE BASED ON SURVEY PROVIDED & SHOULD BE ASSUMED TO BE APPROXIMATE. ALLOW TO CONFIRM ALL RELEVANT DETAILS BEFORE PROCEEDING WITH AFFECTED AREAS.
- W5. ALL WORK TO COMPLY WITH AS3500.3.
- W6. ALL PITS TO BE PRECAST CONCRETE OR F.R.C. UNO.
- W7. DOWNPIPE LOCATIONS SHOULD BE CONFIRMED WITH ARCHITECT'S PLAN UNO.
- W8. GRADE LOCAL SURFACES INTO PITS TO ENSURE COLLECTION OF WATER & THAT THERE ARE NO AREAS OF PONDING, TYPICAL.
- W9. GRATED TRENCHES AND SILT ARRESTOR PITS TO BE INSPECTED AND CLEANED AFTER PERIODS OF HEAVY RAINFALL.
- W10. TREE ROOTS TO BE AVOIDED DURING PLACEMENT OF DRAINAGE SYSTEM.
- W11. ALL PIPES TO BE Ø100 UPVC UNO.
- W12. ALL PIPES TO HAVE 100 MIN. COVER IN LANDSCAPED AREAS AND 600 MIN. COVER IN TRAFFICABLE AREAS.
- W13. ALL INLET AND OUTLET PIPES FROM PITS TO BE CONNECTED AT THE HIGHEST POSSIBLE INVERT LEVEL WHILST KEEPING 1% MIN. GRADE UNLESS NOTED OTHERWISE.
- W14. FINISHED SURFACES TO BE GRADED AWAY FROM THE DWELLING AND TOWARD THE PITS.
- W15. GRATED TRENCHES TO BE 1% MIN. GRADE THROUGHOUT TO OUTLET PIPE.

→
+18.63
DP
DPS



NOTE: DO NOT SCALE OFF DRAWINGS. REFER TO ARCHITECTURAL PLANS. VERIFY DIMENSIONS ON SITE

D	21/06/2024	ISSUED FOR DA	MA
C	18/04/2024	STORMWATER CONCEPT PLAN	MA
B	04/12/2023	ISSUED FOR LANDSCAPE ARCHITECT	MA
A	01/12/2023	ISSUED FOR LANDSCAPE ARCHITECT	MA
REV	DATE	DESCRIPTION	BY

COPYRIGHT
All rights reserved.
These drawings, plans and specifications and the copyright are the property of ABCON and must not be used, reproduced or copied wholly or in part without the written permission of ABCON.

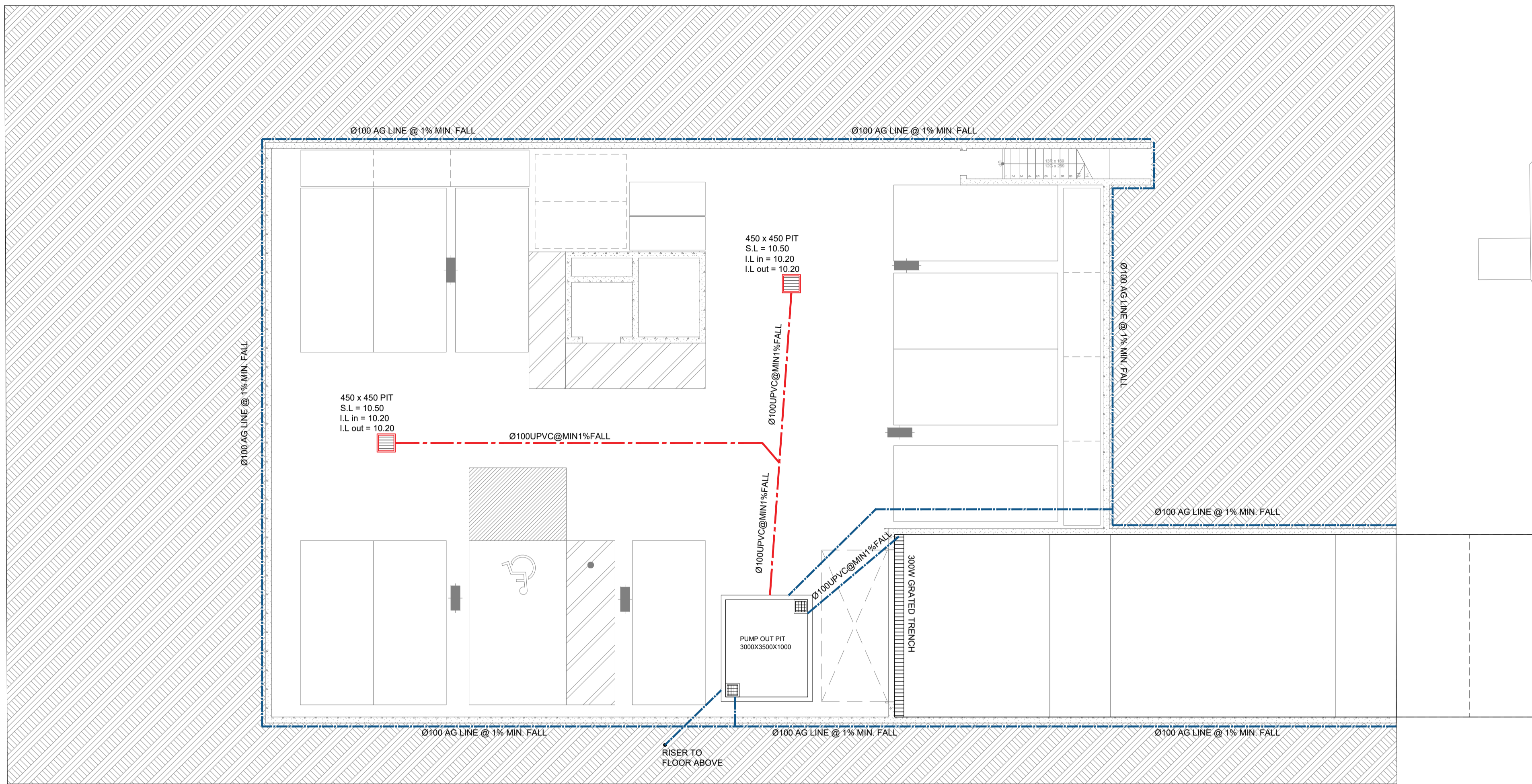


PROPOSED APARTMENT COMPLEX AT
2-4 VIMY ST, BANKSTOWN, NSW 2200

STORMWATER NOTES

JOB NUMBER: 23155	DWG NUMBER: C00	ORIGINAL SIZE: A1
DESIGNED BY: MA	DATE: 21/06/2024	
CHECKED BY: AK	SCALE: AS SHOWN	

21/06/2024 2:14 PM



NOTE: DO NOT SCALE OFF DRAWINGS. REFER TO ARCHITECTURAL PLANS. VERIFY DIMENSIONS ON SITE

REV	DATE	DESCRIPTION	BY
D	21/06/2024	ISSUED FOR DA	MA
C	18/04/2024	STORMWATER CONCEPT PLAN	MA
B	04/12/2023	ISSUED FOR LANDSCAPE ARCHITECT	MA
A	01/12/2023	ISSUED FOR LANDSCAPE ARCHITECT	MA

COPYRIGHT
All rights reserved.
These drawings, plans and specifications and the copyright are the property of ABCON and must not be used, reproduced or copied wholly or in part without the written permission of ABCON.



PROPOSED APARTMENT COMPLEX AT
2-4 VIMY ST, BANKSTOWN, NSW 2200

CONCEPT STORMWATER PLAN
(BASEMENT)

JOB NUMBER: 23155	DWG NUMBER: C01	ORIGINAL SIZE: A1
DESIGNED BY: MA	DATE: 21/06/2024	
CHECKED BY: AK	SCALE: AS SHOWN	

WARNING
PUMP OUT SYSTEM
FAILURE IN BASEMENT
WHEN LIGHT IS FLASHING
AND SIREN SOUNDING

BASEMENT PUMP OUT FAILURE
WARNING SIGN

NOTE:
1- SIGN SHALL BE PLACED IN A CLEAR AND VISIBLE LOCATION
WHERE VEHICLES ENTER THE BASEMENT.

COLOURS:
"WARNING" - RED
BORDER AND OTHER LETTERING - BLACK

PUMP SPECIFICATIONS
STANDARD PUMP-OUT NOTES

THE PUMP-OUT SYSTEM IS DESIGNED TO WORK IN THE FOLLOWING MANNER -

- THE PUMPS SHALL BE PROGRAMMED TO WORK ALTERNATELY SO AS TO ALLOW BOTH PUMPS TO HAVE EQUAL OPERATION LOAD & PUMP LIFE.
- A LOW LEVEL FLOAT SHALL BE PROVIDED TO ENSURE THAT THE MINIMUM REQUIRED WATER LEVEL IS MAINTAINED WITHIN THE SUMP AREA OF THE BELOW GROUND TANK. IN THIS REGARD THIS FLOAT WILL FUNCTION AS AN OFF SWITCH FOR THE PUMPS.
- A SECOND FLOAT SHALL BE PROVIDED AT A HIGHER LEVEL, APPROXIMATELY 300mm ABOVE THE MINIMUM WATER LEVEL, WHEREBY ONE OF THE PUMPS WILL OPERATE & DRAIN THE TANK TO THE LEVEL OF THE LOW LEVEL FLOAT.
- A THIRD FLOAT SHALL BE PROVIDED AT A HIGH LEVEL, WHICH IS APPROXIMATELY THE ROOF LEVEL OF THE BELOW GROUND TANK. THIS FLOAT SHOULD START THE OTHER PUMP THAT IS NOT OPERATING & ACTIVATE THE ALARM.
- AN ALARM SYSTEM SHALL BE PROVIDED WITH A FLASHING STROBE LIGHT & A PUMP FAILURE WARNING SIGN WHICH ARE TO BE LOCATED AT THE DRIVEWAY ENTRANCE TO THE BASEMENT LEVEL. THE ALARM SYSTEM SHALL BE PROVIDED WITH A BATTERY BACK-UP IN CASE OF POWER FAILURE.

COMPONENTS

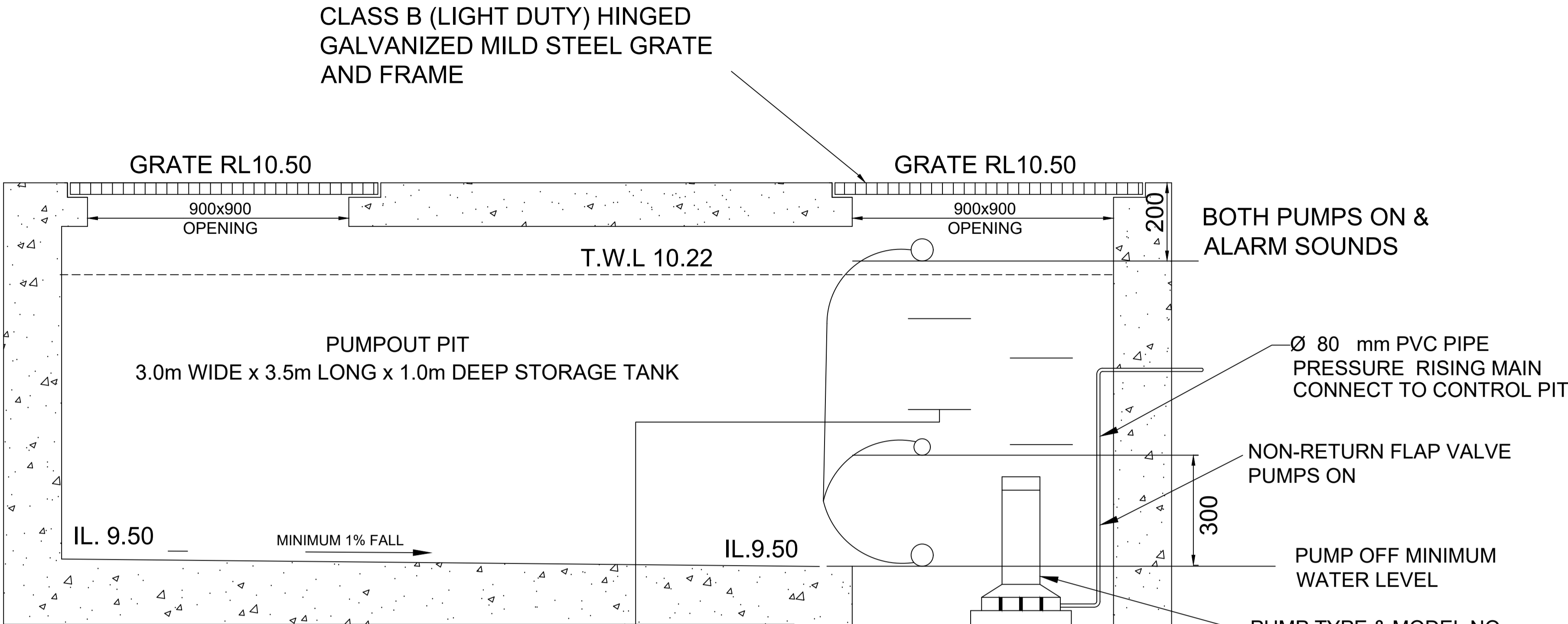
- TWO(2) PUMPS KWIKFLO SUBMERSIBLE PUMPS (415v OR 240v)
- ONE(1) PUMPS KWIK START CONTROL PANEL (CONTROL DESIGN TO ALTERNATE PUMPS ON START ON CONSECUTIVE START OPERATION)
- TWO(2) GATE VALVES)BRONZE)
- TWO(2) CHECK VALVES (SWING TYPE) (BRONZE)
- TWO(2) SETS OF DISCHARGE HOSES WITH KAMLOK QUICK RELEASE COUPLINGS
- ALL IN TANK PIT/PIPE AND PIPE FITTINGS, BRACKETS/SUPPORTS, HD GAL. CHAINS
- FOUR(4) KWIK START KENRAHN MERCURY LEVEL FLOAT REGULATORS
- INSTALLATION IN PROVIDED TANK/PIT

OPTIONS

- TANK PACKAGE/COVERS/MANHOLE, ALARM BELL, LOW LEVEL ALARM REGULATOR

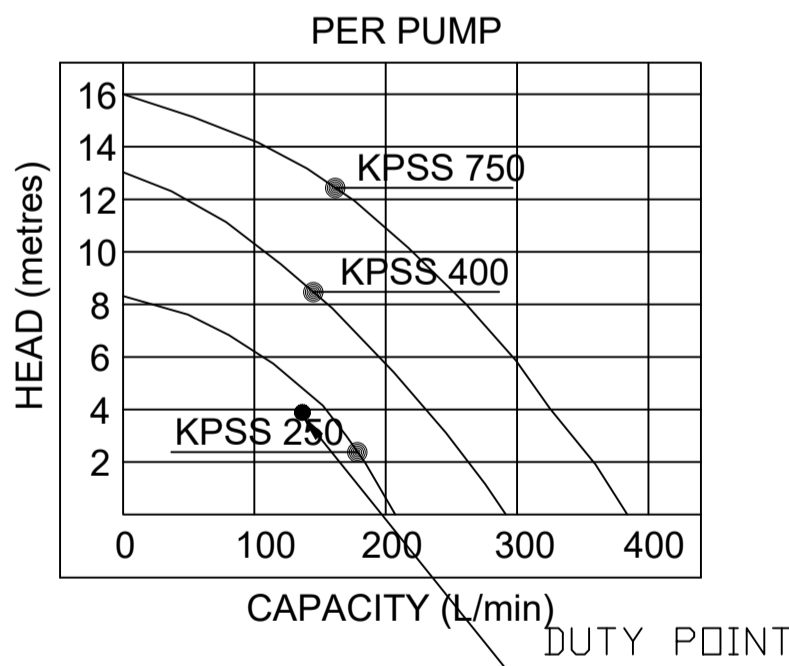
MODEL	DIS. SIZE	MOTOR kw	POWER	Max Capacity	Max Head	Wt. kgs	CABLE m
KPSS 250	40mm BSP	0.25	240v	220 L/min	8 metres	17	5.2metre
KPSS 400	50mm BSP	0.40	240v	290 L/min	13 metres	19	5.2metre
KPSS 750	50mm BSP	0.75	240or415v	380 L/min	16 metres	20	5.2metre

NOTE: DO NOT SCALE OFF DRAWINGS. REFER TO
ARCHITECTURAL PLANS. VERIFY DIMENSIONS ON SITE



PROVIDE GALVANIZED
STEP IRONS AT 300mm
CENTRES IN ACCORDANCE
WITH THE AUST STANDARDS
AT ALL ACCESS POINTS OF
THE TANK

PUMP STORAGE TANK DETAIL
N.T.S

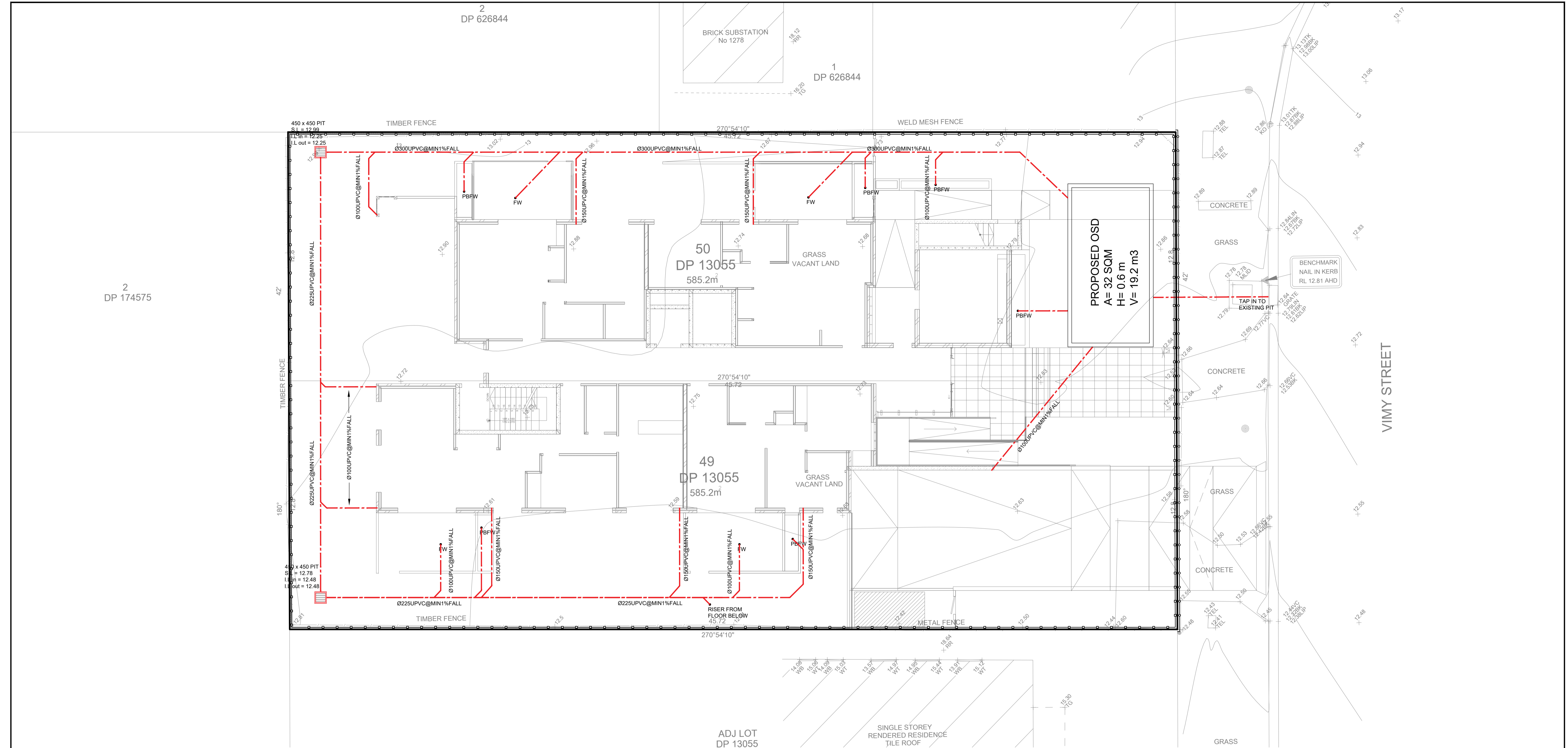


PUMP PERFORMANCE CURVES

PUMP WELL DETAILS

SUMP SIZE AND PUMP SIZE BASE ON 20 YEAR 2 HR STORM INTENSITY IS 39.8mm/hr, AREA DRAINING TOWARDS SUMP IS 126m2
ALLOWANCE MADE FOR SUB SOIL DRAINAGE
 $Q = CIA/3600 = 1.0 \times 39.8 \times 126 / 3600 = 1.393 \text{ l/s}$
VOLUME REQUIRED IS $0.818 \times (2 \times 60 \times 60) = 10029.6 \text{ l}$
STORAGE PROVIDED $3000 \times 3500 \times 1000 = 10500 \text{ l}$
THEREFORE ADEQUATE STORAGE PROVIDED
PUMP OUT RATE BASED ON 20YR 2hr. STORM = 39.8mm/hr
 $Q = CIA/3600 = 1.0 \times 39.8 \times 126 / 3600 = 1.393 \text{ l/s}$
USE KPSS 250 to pump out 1.393l/s at 7m head

			<div><div><div></div><div></div><div></div><div></div><div></div><div></div><div></div><div></div><div></div><div></div><div></div><div></div><div></div><div></div><div></div><div></div><div></div><div></div><div></div><div></div><div></div><div></div><div></div><div></div><div></div><div></div><div></div><div></div><div></div><div></div><div></div><div></div><div></div><div></div><div></div><div></div><div></div><div></div><div></div><div></div><div></div><div></div><div></div><div></div><div></div><div></div><div></div><div></div><div></div><div></div><div></div><div></div><div></div><div></div><div></div><div></div><div></div><div></div><div></div><div></div><div></div><div></div><div></div><div></div><div></div><div></div><div></div><div></div><div></div><div></div><div></div><div></div><div></div><div></div><div></div><div></div><div></div><div></div><div></div><div></div><div></div><div></div><div></div><div></div><div></div><div></div><div></div><div></div><div></div><div></div><div></div><div></div><div></div><div></div><div></div><div></div><div></div><div></div><div></div><div></div><div></div><div></div><div></div><div></div><div></div><div></div><div></div><div></div><div></div><div></div><div></div><div></div><div></div><div></div><div></div><div></div><div></div><div></div><div></div><div></div><div></div><div></div><div></div><div></div><div></div><div></div><div></div><div></div><div></div><div></div><div></div><div></div><div></div><div></div><div></div><div></div><div></div><div></div><div></div><div></div><div></div><div></div><div></div><div></div><div></div><div></div><div></div><div></div><div></div><div></div><div></div><div></div><div></div><div></div><div></div><div></div><div></div><div></div><div></div><div></div><div></div><div></div><div></div><div></div><div></div><div></div><div></div><div></div><div></div><div></div><div></div><div></div><div></div><div></div><div></div><div></div><div></div><div></div><div></div><div></div><div></div><div></div><div></div><div></div><div></div><div></div><div></div><div></div><div></div><div></div><div></div><div></div><div></div><div></div><div></div><div></div><div></div><div></div><div></div><div></div><div></div><div></div><div></div><div></div><div></div><div></div><div></div><div></div><div></div><div></div><div></div><div></div><div></div><div></div><div></div><div></div><div></div><div></div><div></div><div></div><div></div><div></div><div></div><div></div><div></div><div></div><div></div><div></div><div></div><div></div><div></div><div></div><div></div><div></div><div></div><div></div><div></div><div></div><div></div><div></div><div></div><div></div><div></div><div></div><div></div><div></div><div></div><div></div><div></div><div></div><div></div><div></div><div></div><div></div><div></div><div></div><div></div><div></div><div></div><div></div><div></div><div></div><div></div><div></div><div></div><div></div><div></div><div></div><div></div><div></div><div></div><div></div><div></div><div></div><div></div><div></div><div></div><div></div><div></div><div></div><div></div><div></div><div></div><div></div><div></div><div></div><div></div><div></div><div></div><div></div><div></div><div></div><div></div><div></div><div></div><div></div><div></div><div></div><div></div><div></div><div></div><div></div><div></div><div></div><div></div><div></div><div></div><div></div><div></div><div></div><div></div><div></div><div></div><div></div><div></div><div></div><div></div><div></div><div></div><div></div><div></div><div></div><div></div><div></div><div></div><div></div><div></div><div></div><div></div><div></div><div></div><div></div><div></div><div></div><div></div><div></div><div></div><div></div><div></div><div></div><div></div><div></div><div></div><div></div><div></div><div></div><div></div><div></div><div></div><div></div><div></div><div></div><div></div><div></div><div></div><div></div><div></div><div></div><div></div><div></div><div></div><div></div><div></div><div></div><div></div><div></div><div></div><div></div><div></div><div></div><div></div><div></div><div></div><div></div><div></div><div></div><div></div><div></div><div></div><div></div><div></div><div></div><div></div><div></div><div></div><div></div><div></div><div></div><div></div><div></div><div></div><div></div><div></div><div></div><div></div><div></div><div></div><div></div><div></div><div></div><div></div><div></div><div></div><div></div><div></div><div></div><div></div><div></div><div></div><div></div><div></div><div></div><div></div><div></div><div></div><div></div><div></div><div></div><div></div><div></div><div></div><div></div><div></div><div></div><div></div><div></div><div></div><div></div><div></div><div></div><div></div><div></div><div></div><div></div><div></div><div></div><div></div><div></div><div></div><div></div><div></div><div></div><div></div><div></div><div></div><div></div><div></div><div></div><div></div><div></div><div></div><div></div><div></div><div></div><div></div><div></div><div></div><div></div><div></div><div></div><div></div><div></div><div></div><div></div><div></div><div></div><div></div><div></div><div></div><div></div><div></div><div></div><div></div><div></div><div></div><div></div><div></div><div></div><div></div><div></div><div></div><div></div><div></div><div></div><div></div><div></div><div></div><div></div><div></div><div></div><div></div><div></div><div></div><div></div><div></div><div></div><div></div><div></div><div></div><div></div><div></div><div></div><div></div><div></div><div></div><div></div><div></div><div></div><div></div><div></div><div></div><div></div><div></div><div></div><div></div><div></div><div></div><div></div><div></div><div></div><div></div><div></div><div></div><div></div><div></div><div></div><div></div><div></div><div></div><div></div><div></div><div></div><div></div><div></div><div></div><div></div><div></div><div></div><div></div><div></div><div></div><div></div><div></div><div></div><div></div><div></div><div></div><div></div><div></div><div></div><div></div><div></div><div></div><div></div><div></div><div></div><div></div><div></div><div></div><div></div><div></div><div></div><div></div><div></div><div></div><div></div><div></div><div></div><div></div><div></div><div></div><div></div><div></div><div></div><div></div><div></div><div></div><div></div><div></div><div></div><div></div><div></div><div></div><div></div><div></div><div></div><div></div><div></div><div></div><div></div><div></div><div></div><div></div><div></div><div></div><div></div><div></div><div></div><div></div><div></div><div></div><div></div><div></div><div></div><div></div><div></div><div></div><div></div><div></div><div></div><div></div><div></div><div></div><div></div><div></div><div></div><div></div><div></div><div></div><div></div><div></div><div></div><div></div><div></div><div></div><div></div><div></div><div></div><div></div><div></div><div></div><div></div><div></div><div></div><div></div><div></div><div></div><div></div><div></div><div></div><div></div><div></div><div></div><div></div><div></div><div></div><div></div><div></div><div></div><div></div><div></div><div></div><div></div><div></div><div></div><div></div><div></div><div></div><div></div><div></div><div></div><div></div><div></div><div></div><div></div><div></div><div></div><div></div><div></div><div></div><div></div><div></div><div></div><div></div><div></div><div></div><div></div><div></div><div></div><div></div><div></div><div></div><div></div><div></div><div></div><div></div><div></div><div></div><div></div><div></div><div></div><div></div><div></div><div></div><div></div><div></div><div></div><div></div><div></div><div></div><div></div><div></div><div></div><div></div><div></div><div></div><div></div><div></div><div></div><div></div><div></div><div></div><div></div><div></div><div></div><div></div><div></div><div></div><div></div><div></div><div></div><div></div><div></div><div></div><div></div><div></div><div></div><div></div><div></div><div></div><div></div><div></div><div></div><div></div><div></div><div></div><div></div><div></div><div></div><div></div><div></div><div></div><div></div><div></div><div></div><div></div><div></div><div></div><div></div><div></div><div></div><div></div><div></div><div></div><div></div><div></div><div></div><div></div><div></div><div></div><div></div><div></div><div></div><div></div><div></div><div></div><div></div><div></div><div></div><div></div><div></div><div></div><div></div><div></div><div></div><div></div><div></div><div></div><div></div><div></div><div></div><div></div><div></div><div></div><div></div><div></div><div></div><div></div><div></div><div></div><div></div><div></div><div></div><div></div><div></div><div></div><div></div><div></div><div></div><div></div><div></div><div></div><div></div><div></div><div></div><div></div><div></div><div></div><div></div><div></div><div></div><div></div><div></div><div></div><div></div><div></div><div></div><div></div><div></div><div></div><div></div><div></div><div></div><div></div><div></div><div></div><div></div><div></div><div></div><div></div><div></div><div></div><div></div><div></div><div></div><div></div><div></div><div></div><div></div><div></div><div></div><div></div><div></div><div></div><div></div><div></div><div></div><div></div><div></div><div></div><div></div><div></div><div></div><div></div><div></div><div></div><div></div><div></div><div></div><div></div><div></div><div></div><div></div><div></div><div></div><div></div><div></div><div></div><div></div><div></div><div></div><div></div><div></div><div></div><div></div><div></div><div></div><div></div><div></div><div></div><div></div><div></div><div></div><div></div><div></div><div></div><div></div><div></div><div></div><div></div><div></div><div></div><div></div><div></div><div></div><div></div><div></div><div></div><div></div><div></div><div></div><div></div><div></div><div></div><div></div><div></div><div></div><div></div><div></div><div></div><div></div><div></div><div></div><div></div><div></div><div></div><div></div><div></div><div></div><div></div><div></div><div></div><div></div><div></div><div></div><div></div><div></div><div></div><div></div><div></div><div></div><div></div><div></div><div></div><div></div><div></div><div></div><div></div><div></div><div></div><div></div><div></div><div></div><div></div><div></div><div></div><div></div><div></div><div></div><div></div><div></div><div></div><div></div><div></div><div></div><div></div><div></div><div></div><div></div><div></div><div></div><div></div><div></div><div></div><div></div><div></div><div></div><div></div><div></div><div></div><div></div><div></div><div></div><div></div><div></div><div></div><div></div><div></div><div></div><div></div><div></div><div></div><div></div><div></div><div></div><div></div><div></div><div></div><div></div><div></div><div></div><div></div><div></div><div></div><div></div><div></div><div></div><div></div><div></div><div></div><div></div><div></div><div></div><div></div><div></div><div></div><div></div><div></div><div></div><div></div><div></div><div></div><div></div><div></div><div></div><div></div><div></div><div></div><div></div><div></div><div></div><div></div><div></div><div></div><div></div><div></div><div></div><div></div><div></div><div></div><div></div><div></div><div></div><div></div><div></div><div></div><div></div><div></div><div></div><div></div><div></div><div></div><div></div><div></div><div></div><div></div><div></div><div></div><div></div><div></div><div></div><div></div><div></div><div></div><div></div><div></div><div></div><div></div><div></div><div></div><div></div><div></div><div></div><div></div><div></div><div></div><div></div><div></div><div></div><div></div><div></div><div></div><div></div><div></div><div></div><div></div><div></div><div></div><div></div><div></div><div></div><div></div><div></div><div></div><div></div><div></div><div></div><div></div><div></div><div></div><div></div><div></div><div></div><div></div><div></div><div></div><div></div><div></div><div></div><div></div><div></div><div></div><div></div><div></div><div></div><div></div><div></div><div></div><div></div><div></div><div></div><div></div><div></div><div></div><div></div><div></div><div></div><div></div><div></div><div></div><div></div><div></div><div></div><div></div><div></div></div></div>	
--	--	--	---	--



NOTE:

DOWNPIPE SIZE TO BE 100 DIA.
DROPPER SIZE TO BE 150 DIA.
GUTTER SIZE TO BE 150MM.

SEDIMENT CONTROL NOTES:

- 1- ALL EROSION AND SEDIMENT CONTROL MEASURES TO BE INSTALLED PRIOR TO SITE DISTURBANCE.
- 2- STRIPPING OF GRASS AND VEGETATION ETC. FROM SITE SHALL BE KEPT TO A MINIMUM.
- 3- ALL SEDIMENT CONTROL STRUCTURES TO BE INSPECTED AFTER EACH RAINFALL EVENT FOR AND ALL TRAPPED SEDIMENT TO STRUCTURAL DAMAGE BE REMOVED TA A NOMINATED STOCKPILE SITE.

	SITE BOUNDARY
	SEDIMENT CONTROL LINE
	TEMPORARY FENCE

21/06/2024 2:14 PM

NOTE: DO NOT SCALE OFF DRAWINGS. REFER TO ARCHITECTURAL PLANS. VERIFY DIMENSIONS ON SITE

D	21/06/2024	ISSUED FOR DA	MA
C	18/04/2024	STORMWATER CONCEPT PLAN	MA
B	04/12/2023	ISSUED FOR LANDSCAPE ARCHITECT	MA
A	01/12/2023	ISSUED FOR LANDSCAPE ARCHITECT	MA
REV	DATE	DESCRIPTION	BY

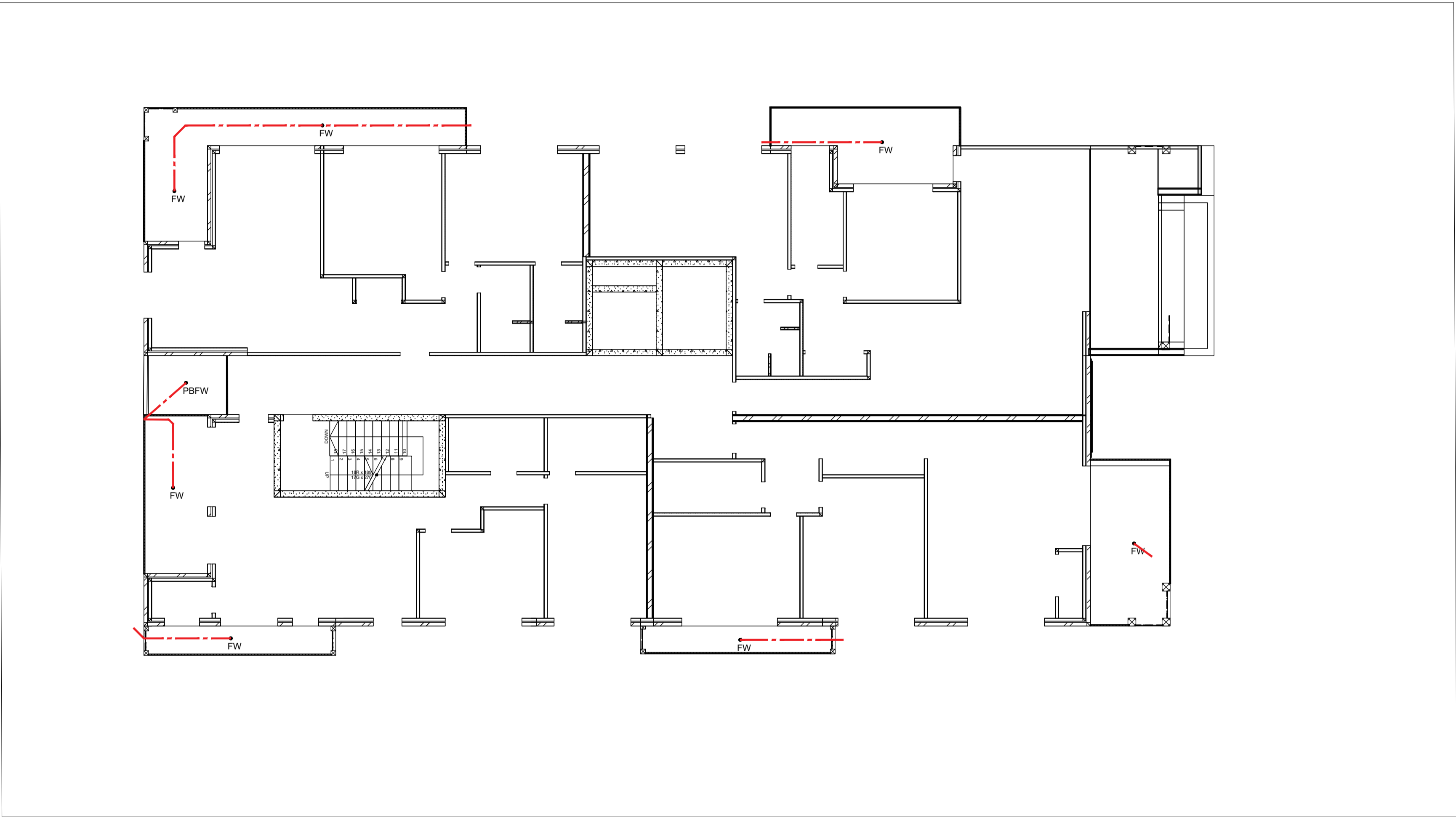
COPYRIGHT
All rights reserved.
These drawings, plans and specifications and the copyright are the property of ABCON and must not be used, reproduced or copied wholly or in part without the written permission of ABCON.



PROPOSED APARTMENT COMPLEX AT
2-4 VIMY ST, BANKSTOWN, NSW 2200

CONCEPT STORMWATER PLAN
(GROUND FLOOR)

JOB NUMBER: 23155	DWG NUMBER: C03	ORIGINAL SIZE: A1
DESIGNED BY: MA	DATE: 21/06/2024	
CHECKED BY: AK	SCALE: AS SHOWN	



NOTE:
DOWNPIPE SIZE TO BE 100 DIA.
DROPPER SIZE TO BE 150 DIA.
GUTTER SIZE TO BE 150MM.

- SEDIMENT CONTROL NOTES:**
- 1- ALL EROSION AND SEDIMENT CONTROL MEASURES TO BE INSTALLED PRIOR TO SITE DISTURBANCE.
 - 2- STRIPPING OF GRASS AND VEGETATION ETC. FROM SITE SHALL BE KEPT TO A MINIMUM.
 - 3- ALL SEDIMENT CONTROL STRUCTURES TO BE INSPECTED AFTER EACH RAINFALL EVENT FOR AND ALL TRAPPED SEDIMENT TO STRUCTURAL DAMAGE BE REMOVED TA A NOMINATED STOCKPILE SITE.

SITE BOUNDARY

SEDIMENT CONTROL LINE

TEMPORARY FENCE

NOTE: DO NOT SCALE OFF DRAWINGS. REFER TO ARCHITECTURAL PLANS. VERIFY DIMENSIONS ON SITE

D	21/06/2024	ISSUED FOR DA	MA
C	18/04/2024	STORMWATER CONCEPT PLAN	MA
B	04/12/2023	ISSUED FOR LANDSCAPE ARCHITECT	MA
A	01/12/2023	ISSUED FOR LANDSCAPE ARCHITECT	MA
REV	DATE	DESCRIPTION	BY

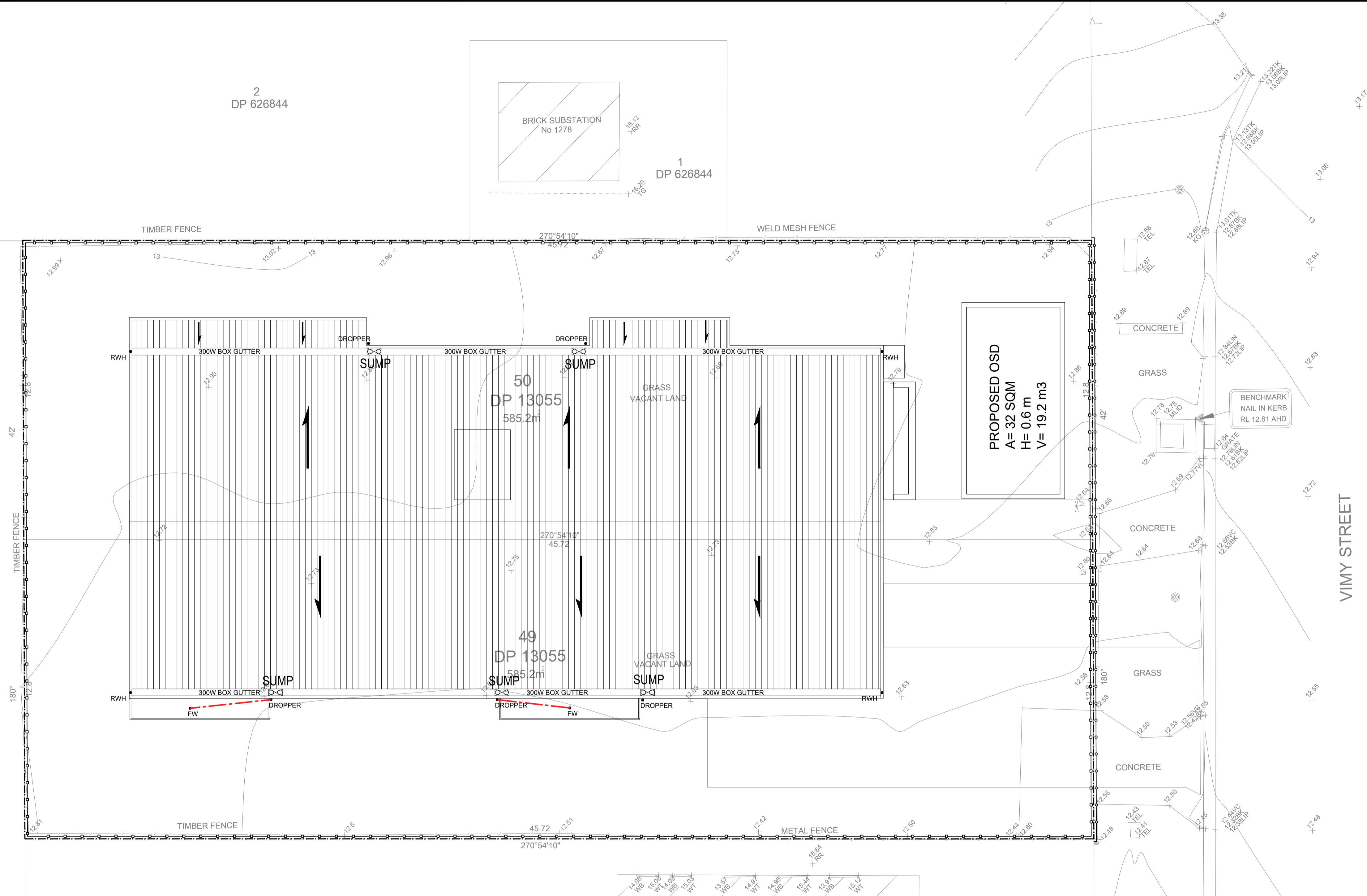
COPYRIGHT
All rights reserved.
These drawings, plans and specifications and the copyright are the property of ABCON and must not be used, reproduced or copied wholly or in part without the written permission of ABCON.



PROPOSED APARTMENT COMPLEX AT
2-4 VIMY ST, BANKSTOWN, NSW 2200

CONCEPT STORMWATER PLAN
(FIRST FLOOR)

JOB NUMBER: 23155	DWG NUMBER: C04	ORIGINAL SIZE: A1
DESIGNED BY: MA	DATE: 21/06/2024	
CHECKED BY: AK	SCALE: AS SHOWN	



NOTE:

DOWNPIPE SIZE TO BE 100 DIA.
DROPPER SIZE TO BE 150 DIA.
GUTTER SIZE TO BE 150MM.

SEDIMENT CONTROL NOTES:

- 1- ALL EROSION AND SEDIMENT CONTROL MEASURES TO BE INSTALLED PRIOR TO SITE DISTURBANCE.
- 2- STRIPPING OF GRASS AND VEGETATION ETC. FROM SITE SHALL BE KEPT TO A MINIMUM.
- 3- ALL SEDIMENT CONTROL STRUCTURES TO BE INSPECTED AFTER EACH RAINFALL EVENT FOR AND ALL TRAPPED SEDIMENT TO STRUCTURAL DAMAGE BE REMOVED TA A NOMINATED STOCKPILE SITE.

NOTE: DO NOT SCALE OFF DRAWINGS. REFER TO
ARCHITECTURAL PLANS. VERIFY DIMENSIONS ON SITE

D	21/06/2024	ISSUED FOR DA	MA
C	18/04/2024	STORMWATER CONCEPT PLAN	MA
B	04/12/2023	ISSUED FOR LANDSCAPE ARCHITECT	MA
A	01/12/2023	ISSUED FOR LANDSCAPE ARCHITECT	MA
REV	DATE	DESCRIPTION	BY

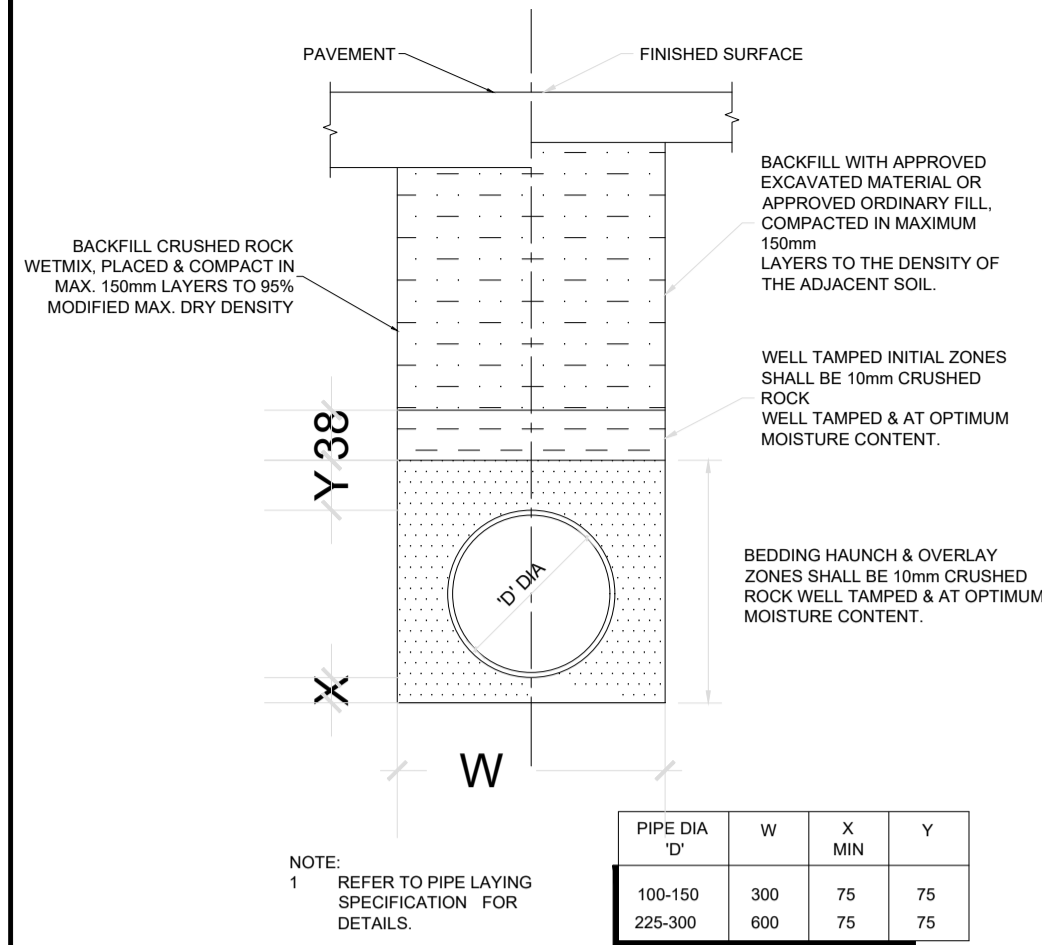
COPYRIGHT
All rights reserved.
These drawings, plans and specifications and
the copyright are the property of ABCON and
must not be used, reproduced or copied wholly
or in part without the written permission of
ABCON.



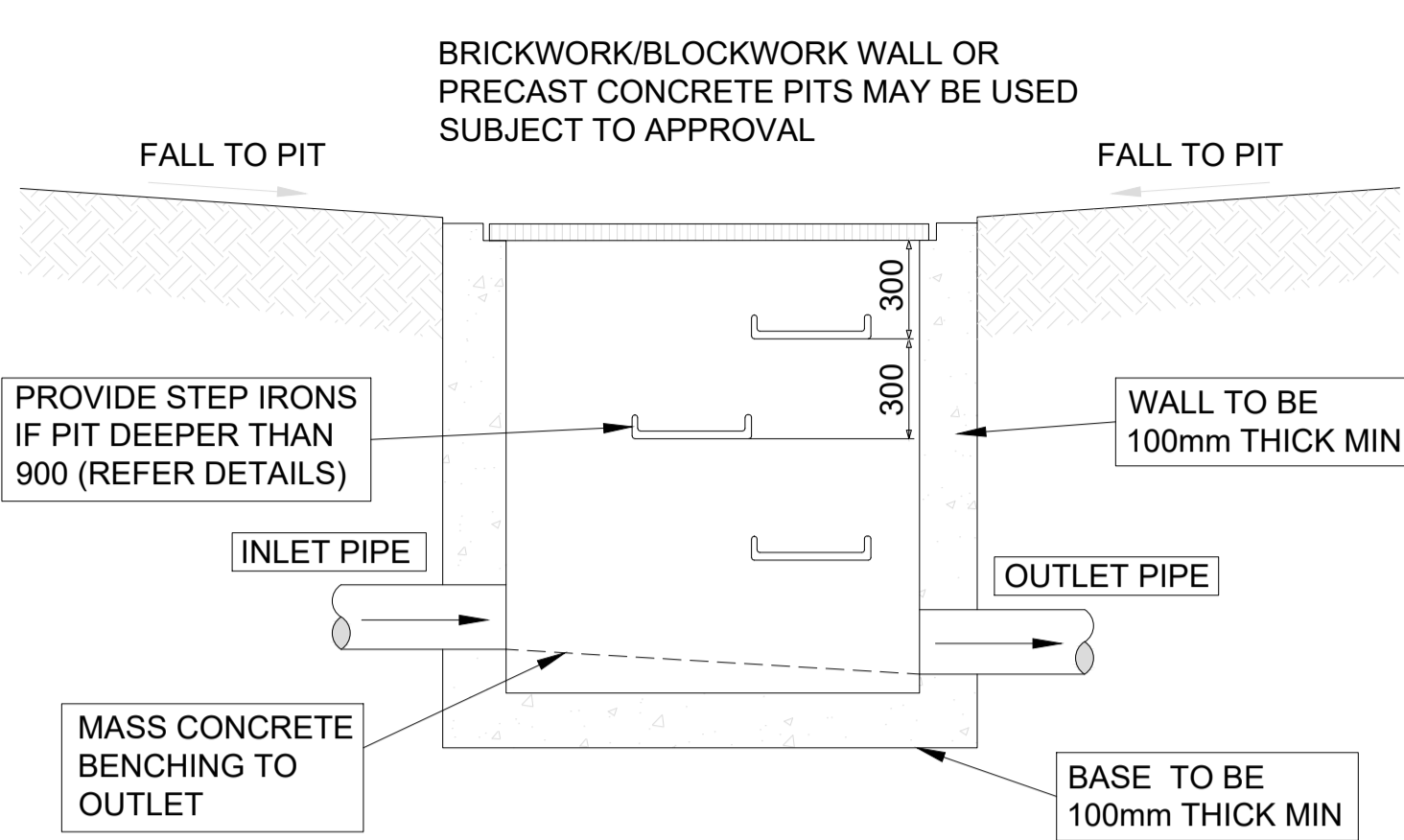
PROPOSED APARTMENT COMPLEX AT
2-4 VIMY ST, BANKSTOWN, NSW 2200

CONCEPT STORMWATER PLAN
(ROOF)

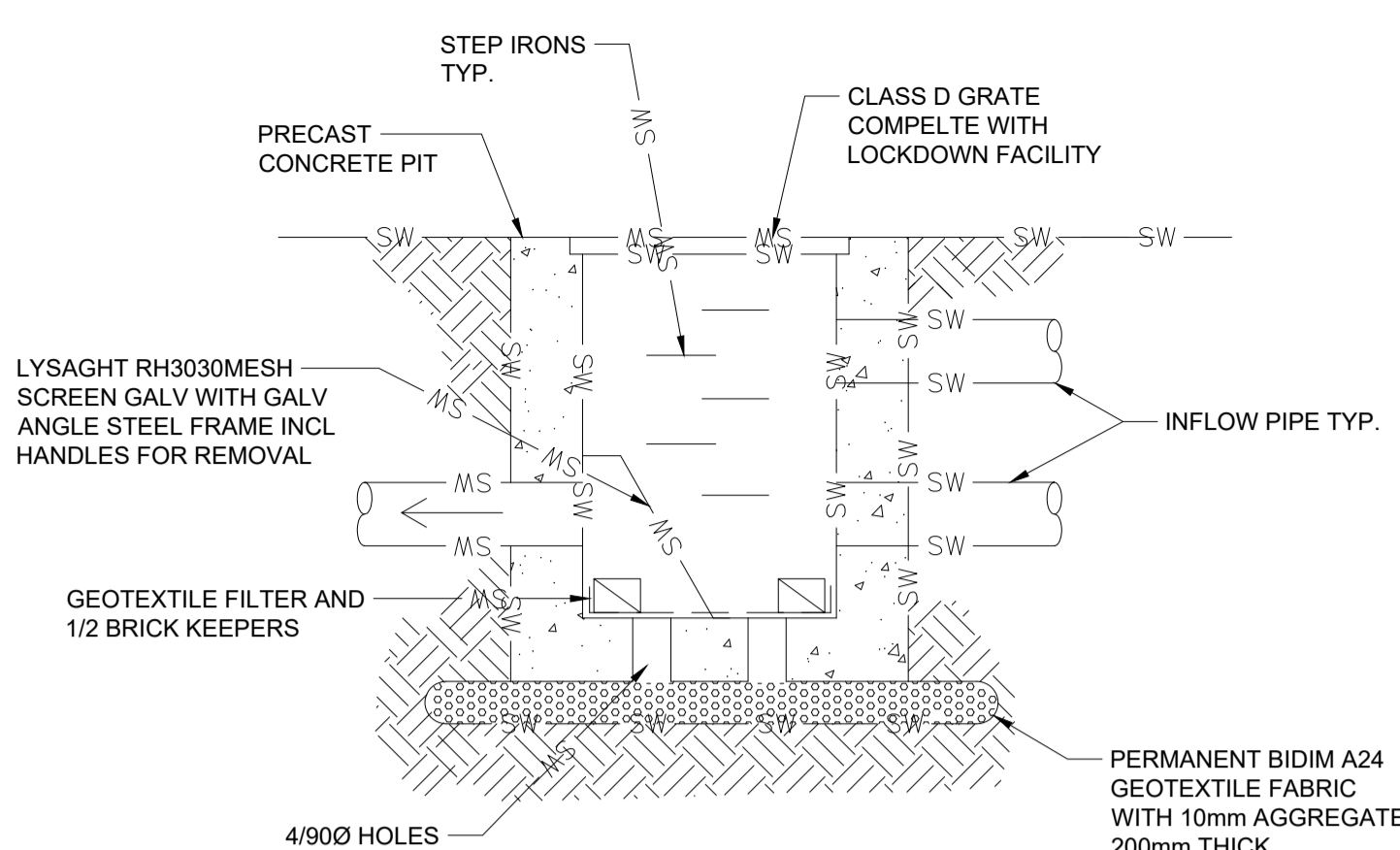
JOB NUMBER: 23155	DWG NUMBER: C05	ORIGINAL SIZE: A1
DESIGNED BY: MA	DATE: 21/06/2024	
CHECKED BY: AK	SCALE: AS SHOWN	



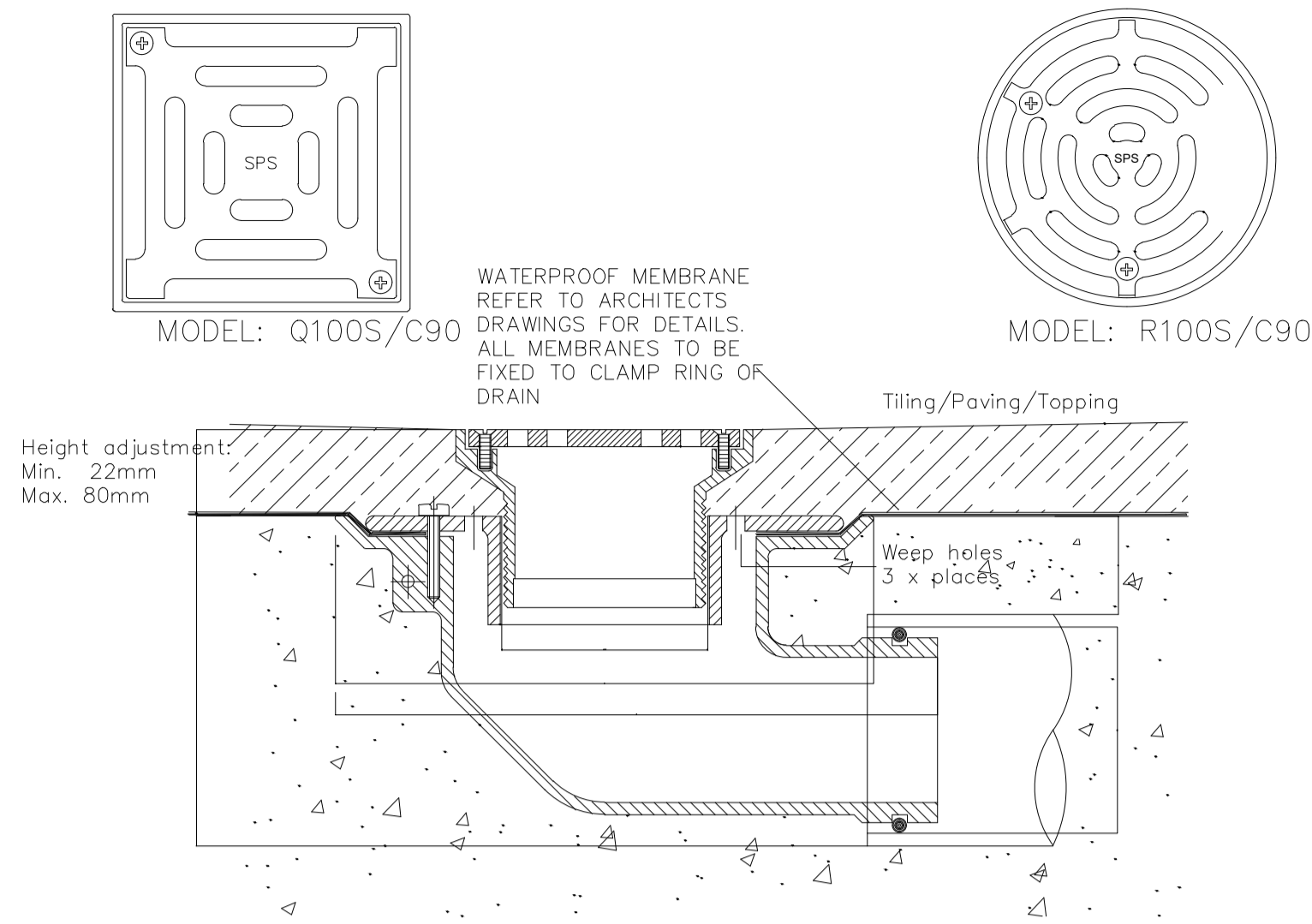
TYPICAL PIPE LAYING DETAIL
1:20



TYPICAL PIT DETAIL
N.T.S.



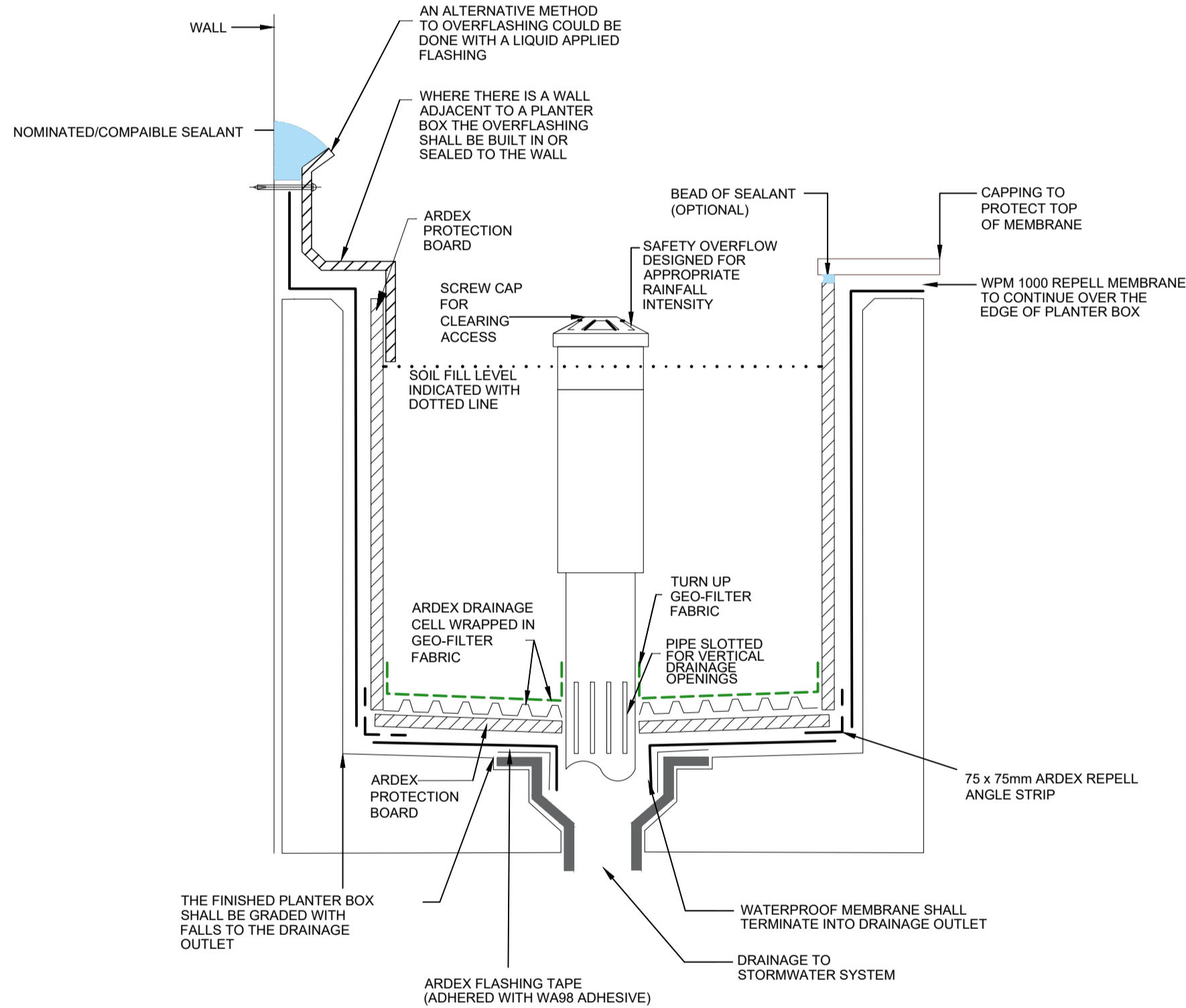
SILT ARRESTOR/GROSS POLLUTANT TRAP DETAIL
N.T.S.



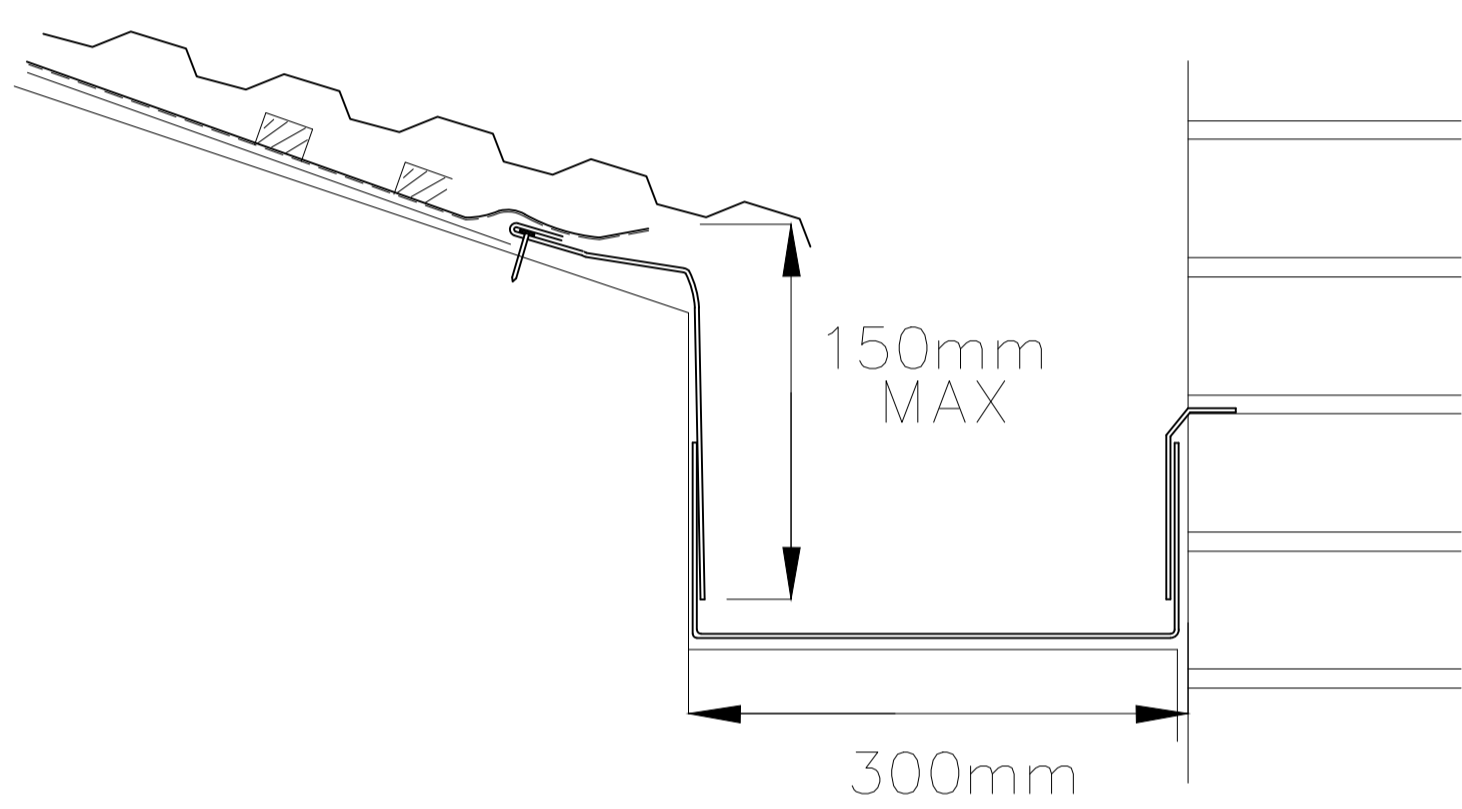
TYPICAL BALCONY OUTLET
SPS SIDE OUTLET DRAIN

NOTES:

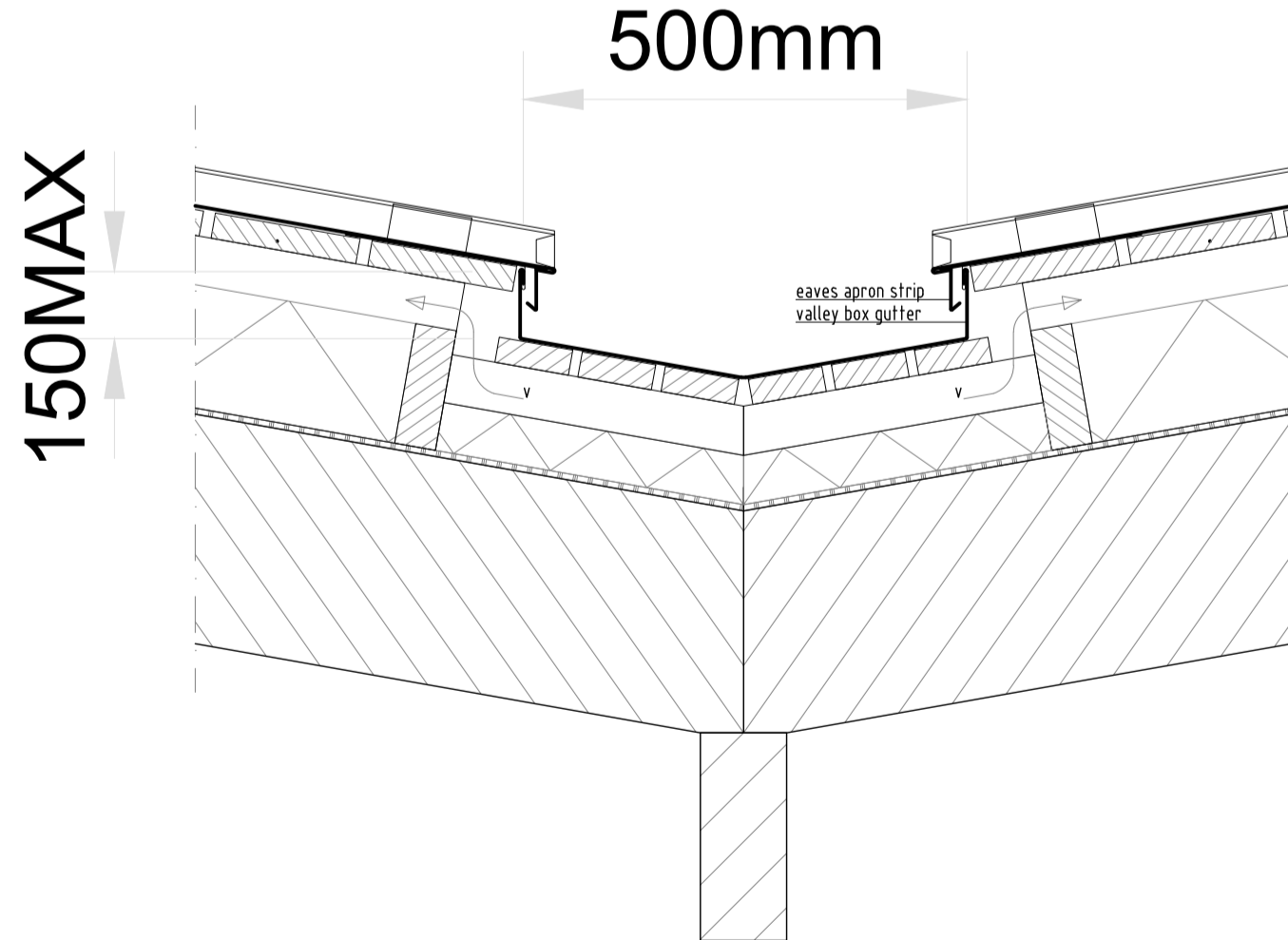
1. ALL CAST IN PIPES FOR BALCONY TO BE ϕ 65mm MIN.
2. ALL CAST IN PIPES TO BE HDPE.



PLANTER BOX FLOOR WASTE DETAIL

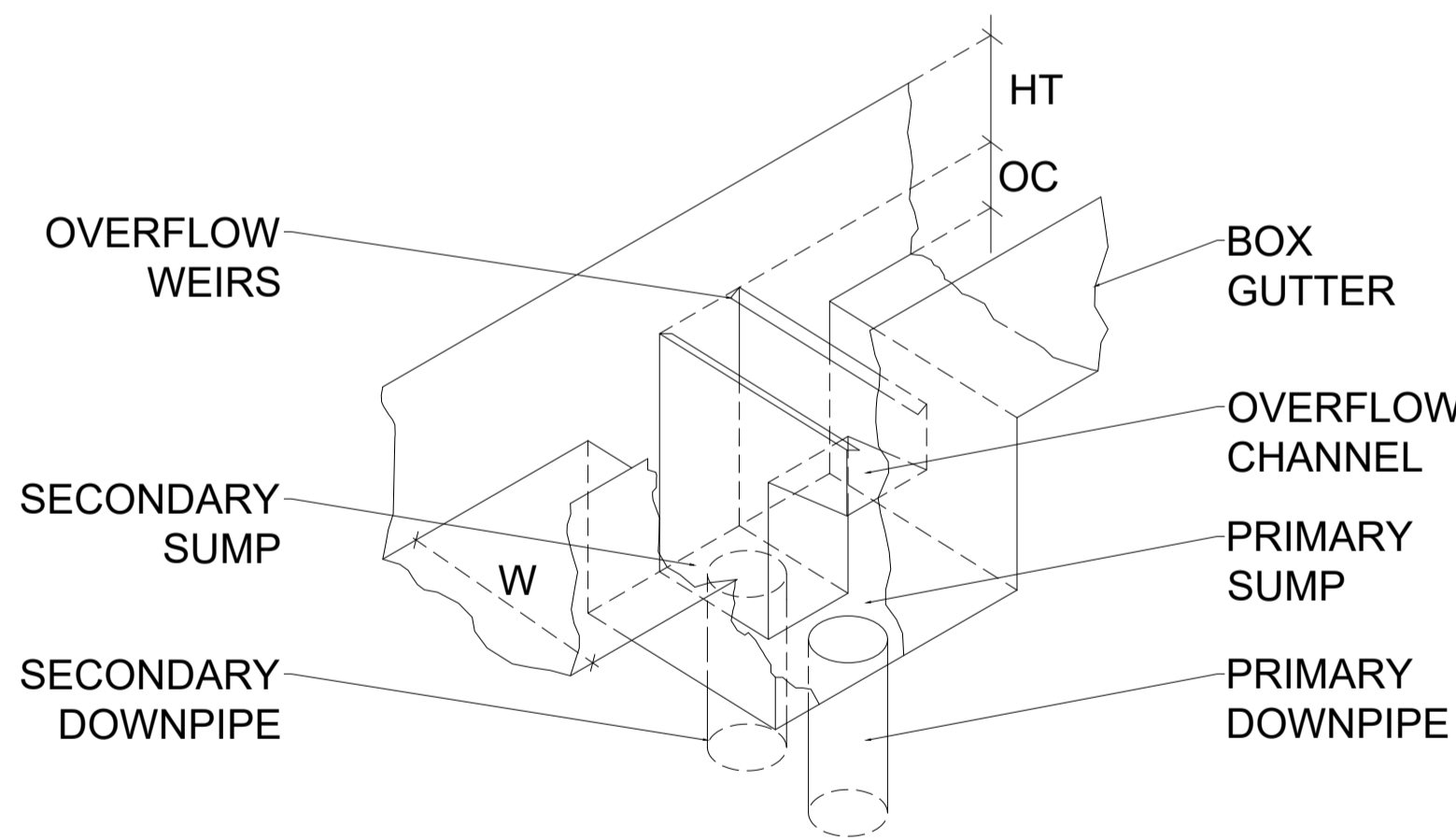


BOX GUTTER



VALLEY BOX GUTTER

1:20



TYPICAL SUMP DETAIL
1:20

NOTE: DO NOT SCALE OFF DRAWINGS. REFER TO ARCHITECTURAL PLANS. VERIFY DIMENSIONS ON SITE

REV	DATE	DESCRIPTION	BY
D	21/06/2024	ISSUED FOR DA	MA
C	18/04/2024	STORMWATER CONCEPT PLAN	MA
B	04/12/2023	ISSUED FOR LANDSCAPE ARCHITECT	MA
A	01/12/2023	ISSUED FOR LANDSCAPE ARCHITECT	MA

COPYRIGHT
All rights reserved.
These drawings, plans and specifications and the copyright are the property of ABCON and must not be used, reproduced or copied wholly or in part without the written permission of ABCON.

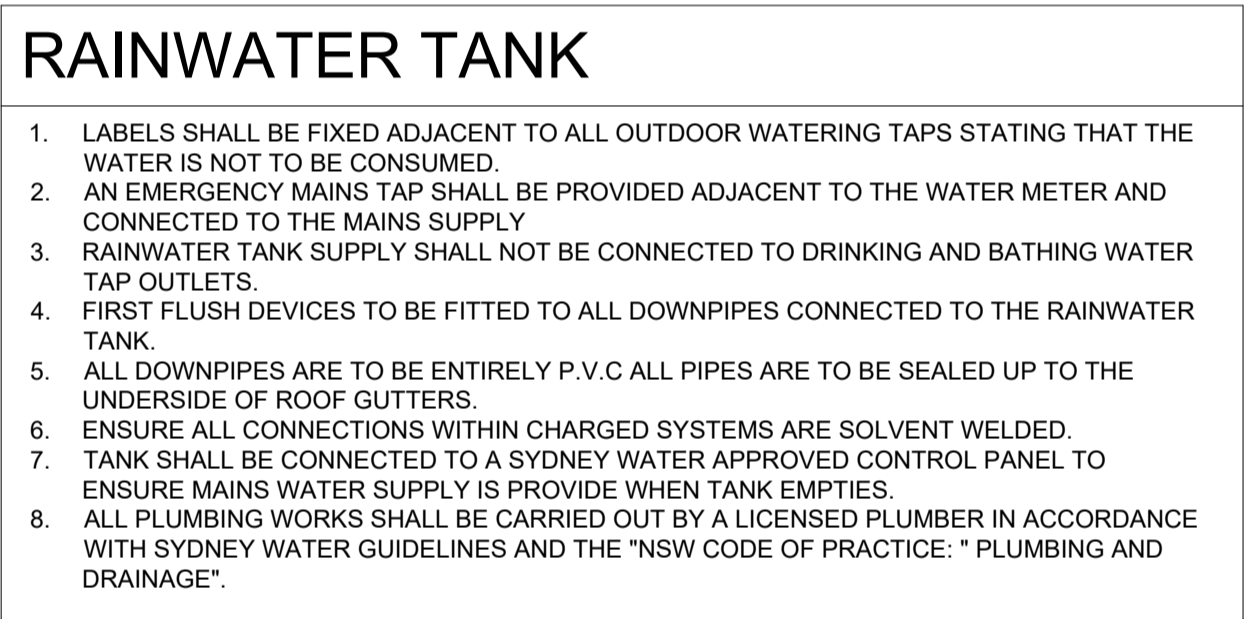
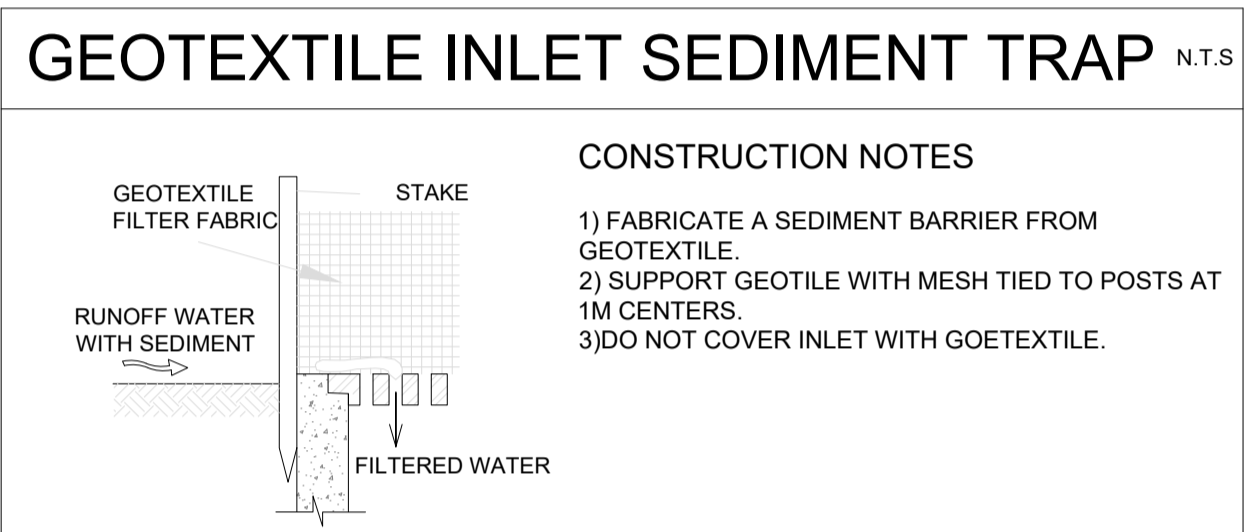
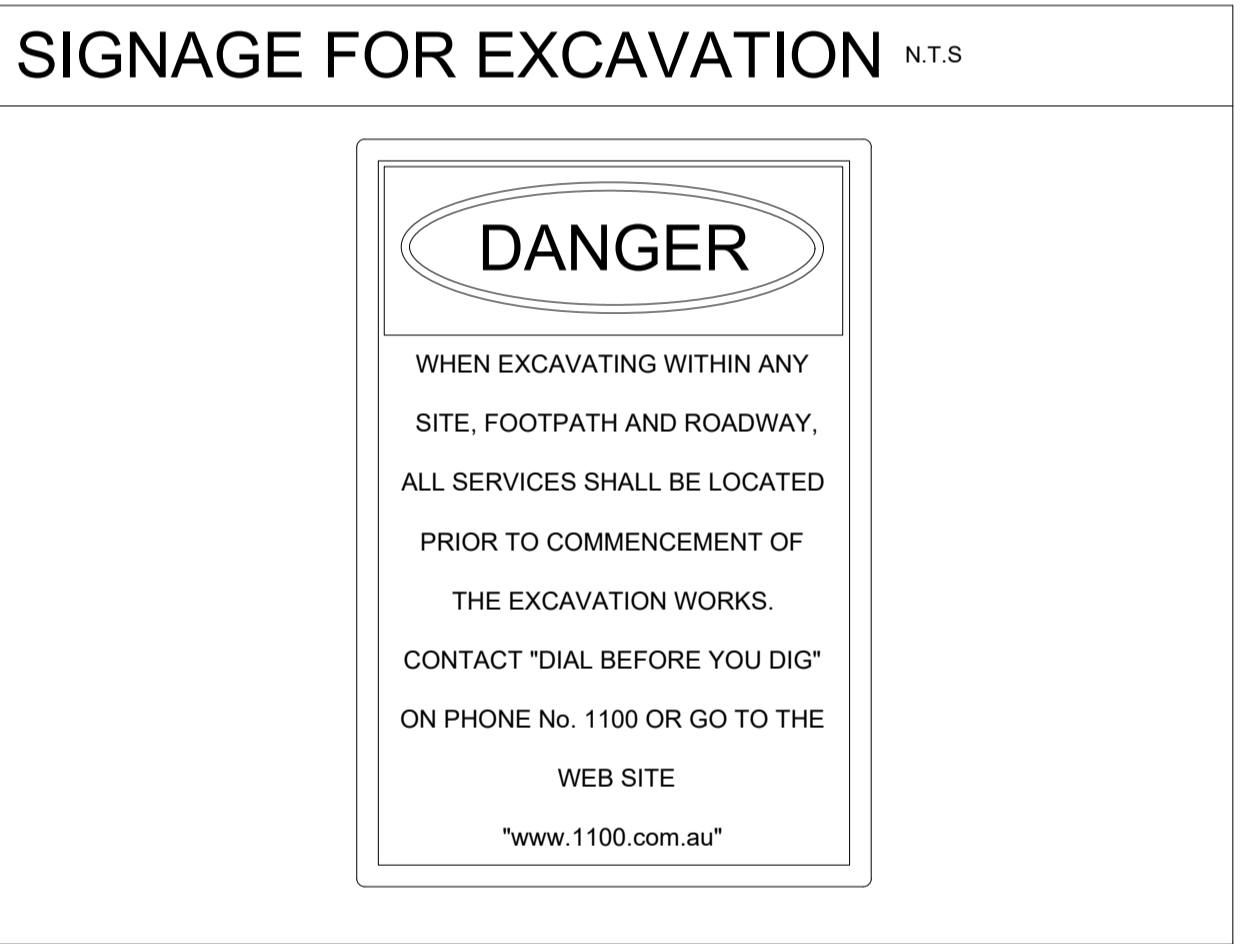
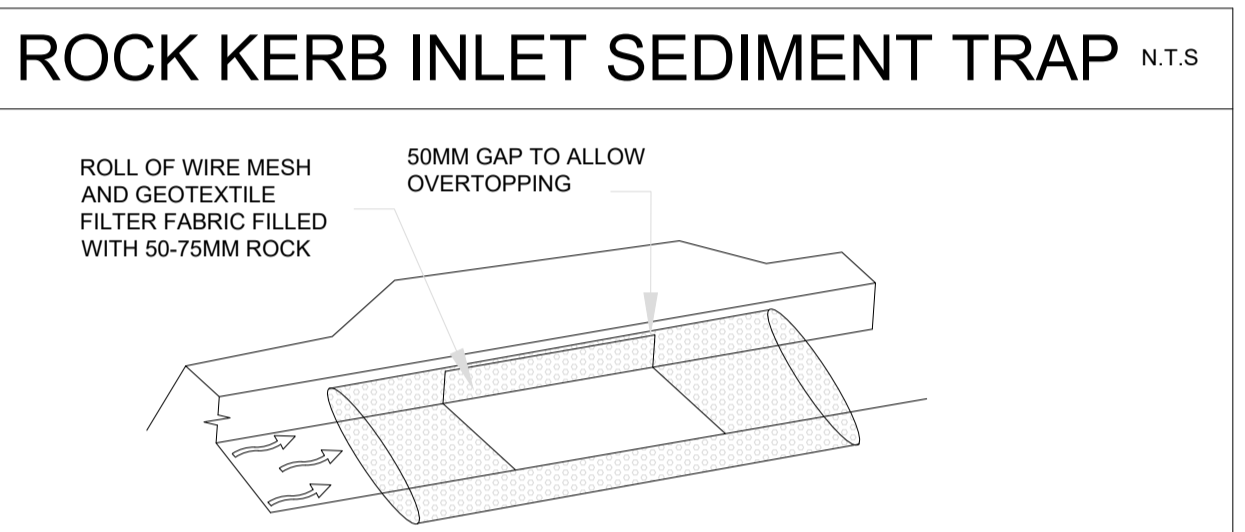
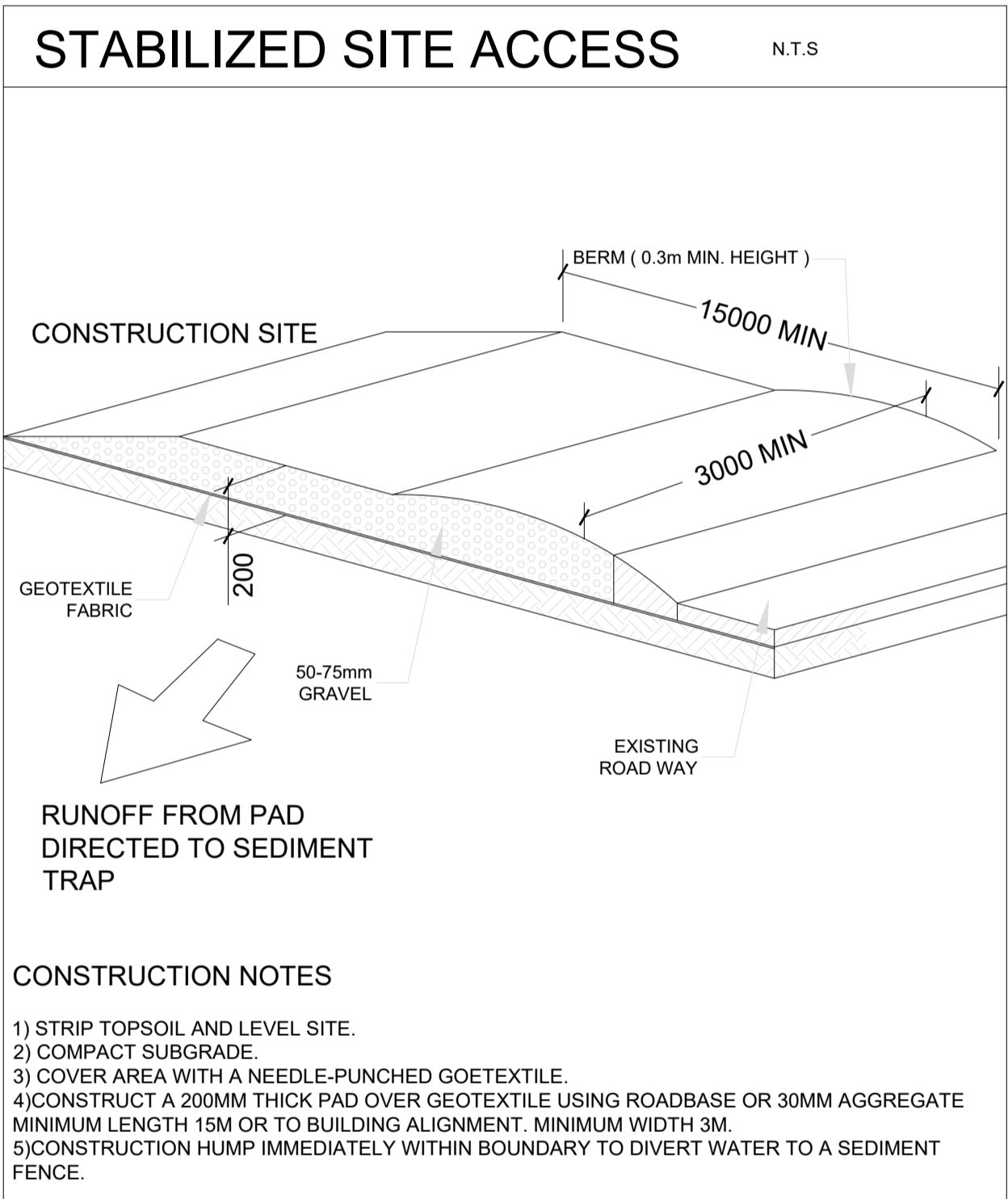
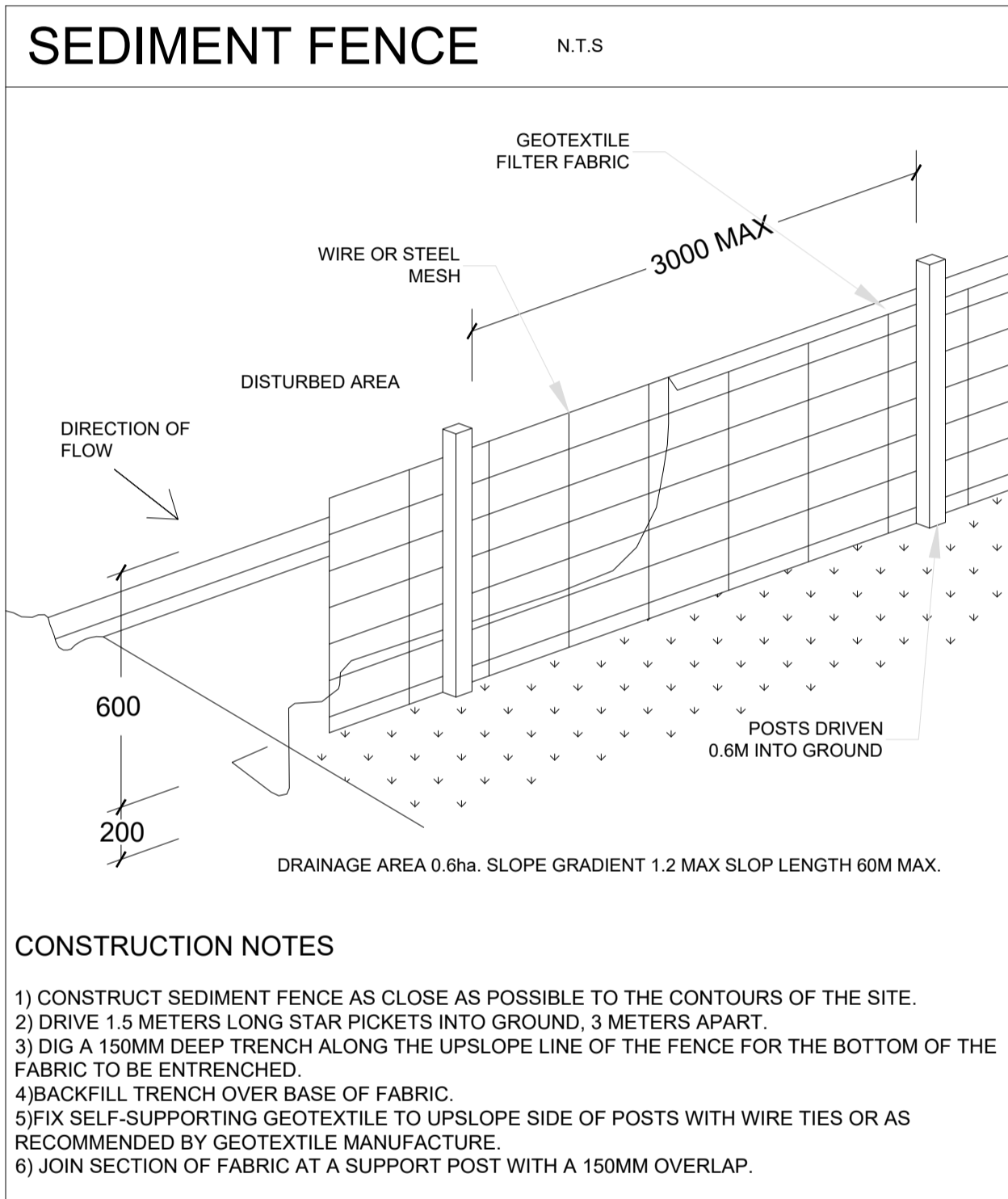


PROPOSED APARTMENT COMPLEX AT
2-4 VIMY ST, BANKSTOWN, NSW 2200

STORMWATER DETAILS

JOB NUMBER: 23155	DWG NUMBER: C06	ORIGINAL SIZE: A1
DESIGNED BY: MA	DATE: 21/06/2024	
CHECKED BY: AK	SCALE: AS SHOWN	

SEDIMENT & EROSION CONTROL PLAN



NOTE: DO NOT SCALE OFF DRAWINGS. REFER TO ARCHITECTURAL PLANS. VERIFY DIMENSIONS ON SITE

REV	DATE	DESCRIPTION	BY
D	21/06/2024	ISSUED FOR DA	MA
C	18/04/2024	STORMWATER CONCEPT PLAN	MA
B	04/12/2023	ISSUED FOR LANDSCAPE ARCHITECT	MA
A	01/12/2023	ISSUED FOR LANDSCAPE ARCHITECT	MA

COPYRIGHT
All rights reserved.
These drawings, plans and specifications and the copyright are the property of ABCON and must not be used, reproduced or copied wholly or in part without the written permission of ABCON.



PROPOSED APARTMENT COMPLEX AT
2-4 VIMY ST, BANKSTOWN, NSW 2200

SEDIMENT CONTROL DETAILS

JOB NUMBER: 23155	DWG NUMBER: C07	ORIGINAL SIZE: A1
DESIGNED BY: MA	DATE: 21/06/2024	
CHECKED BY: AK	SCALE: AS SHOWN	